

DenTech China
2024

www.dentech.com.cn

第二十七届 中国国际口腔器材展览会

The 27th China International Exhibition on Dental Equipment,
Technology & Products

2024.10.24 - 27

上海世博展览馆

Shanghai World Expo
Exhibition and Convention Center

批准单位：中华人民共和国商务部

主办单位：中国国际科技交流中心 / 中国科协新技术开发中心有限责任公司

承办单位：上海博星展览有限公司

Approved by: Ministry of Commerce of the People's Republic of China

Organized by: China Centre for International Science and Technology Exchange / CAST New Technology Center Co., Ltd.

Sponsored by: Shanghai Informa Markets ShowStar Exhibition Company Limited



130,000+



850+



10.6%



50,000m²+



添加官方微信
OFFICIAL WECHAT



DenTech China

观众数据分析

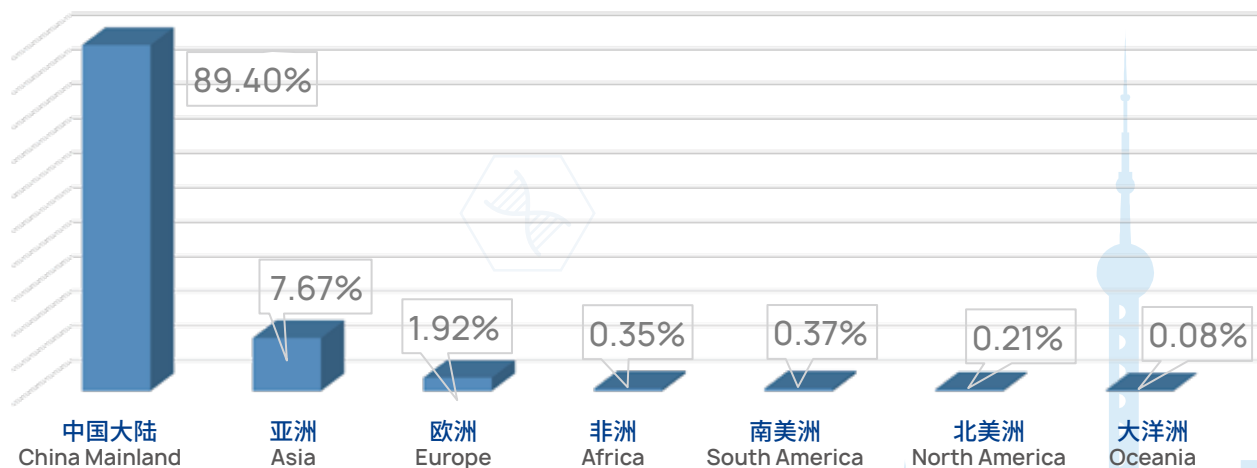
Visitor Analysis

- 130,000+专业观众(人次)
130,000+ trade visits
- 国内观众占比89.4%
89.4% from China Mainland
- 海外观众占比10.6%
10.6% overseas visitors
- 来自99个国家和地区
from 99 countries and regions



观众地理分布(比例)

Visitor Geographic Distribution (Percentage)



观众数据分析

Visitor Analysis

海外买家数量最多的国家

Countries with Highest Number of Visitors

亚洲

Asia



韩国
Korea



菲律宾
Philippine



印度
India



泰国
Thailand



越南
Vietnam



马来西亚
Malaysia

欧洲

Europe



意大利
Italy



波兰
Poland



英国
U.K.



法国
France



德国
Germany



罗马尼亚
Romania

北美、南美和非洲地区

North & South America, Africa



埃及
Egypt



秘鲁
Peru



美国
U.S.A.



巴西
Brazil



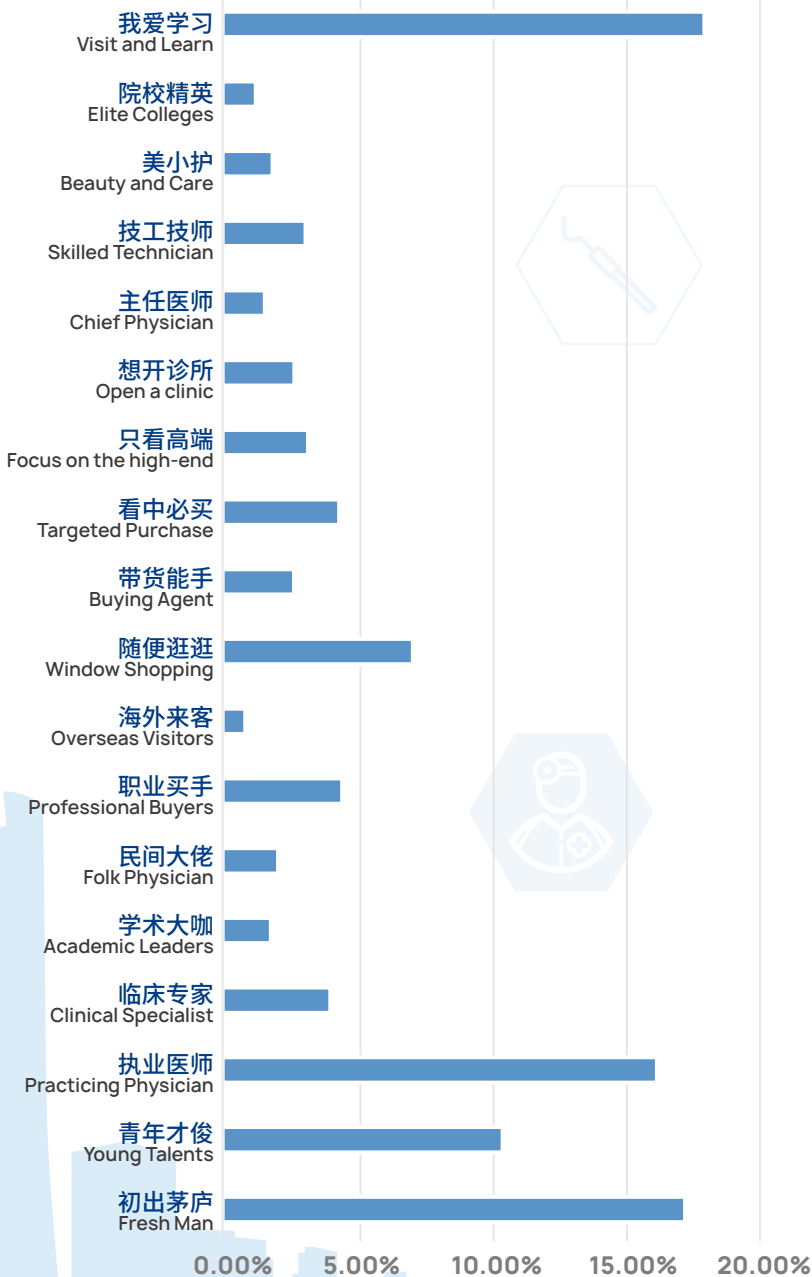
澳大利亚
Australia



加拿大
Canada

观众业务性质划分(国内)

Job Category (Domestic)





一带一路，海外买家团云集
Overseas Buyers Delegation Groups

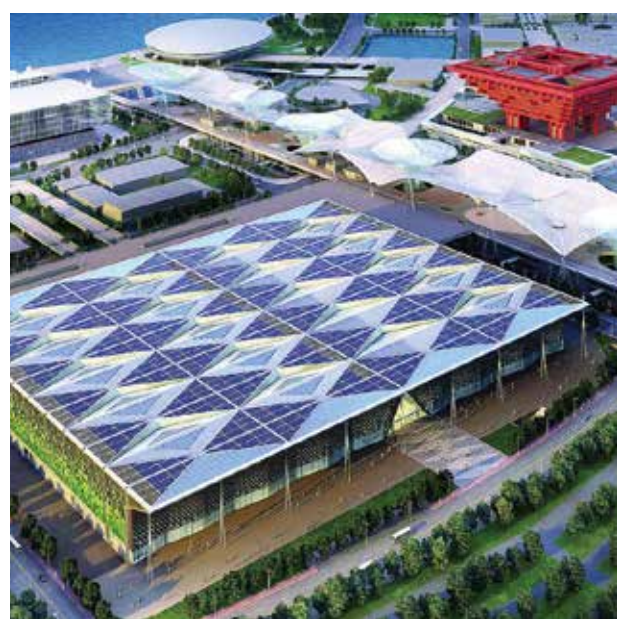


展馆介绍
VENUE FOR DENTECH CHINA 2024

上海世博展览馆傲踞2010年上海世博会顶级核心区域，是成就一流展会盛事的至优选择。

上海世博展览馆位于世博轴西侧，紧邻中华艺术宫、世博中心以及梅赛德斯-奔驰文化中心。它连接南浦大桥、卢浦大桥、打浦路隧道、西藏南路隧道等过江要道，坐拥周边数十条公交线路，轨道交通7、8号线(耀华路站)、8号线(中华艺术宫站)、13号线(世博大道站) 均可到达展馆。

2024年第二十七届中国国际口腔器材展览会将于2024年10月24日至10月27日在上海世博展览馆举办。



Shanghai World Expo Exhibition and Convention Center (SWECC) is located in the heart of the 2010 Shanghai World Expo site, which is considered as the primary choice for the professionals of first-class international events.

SWECC, which is located on the east riverside of the Huangpu River, west of the Shanghai World Expo Axis, is adjoined with the China Art Museum, Mercedes-Benz Arena and Expo Centre by the Expo Axis. The convenient transportation results from SWECC's excellent location connected by the over-river thoroughfares, such as: Nanpu Bridge, Lupu Bridge, Dapu Tunnel, Shangnan Rd. and Yaohua Rd.. SWECC is in the area which is surrounded by dozens of bus stations. The through metro line 7, 8 (Yaohua Rd.), line 8 (China Art Museum) and line 13 (Shibo Avenue) will take you to the destination as well.

DenTech China 2024 will be held at Shanghai World Expo Exhibition and Convention Center On 2024.10.24-27.

DENTECH CHINA 2024

DenTech China 的全媒体时代
DENTECH CHINA'S OMNI-MEDIA

全方位的社交媒体
SOCIAL MEDIA

官方微信 & 官方小程序 OFFICIAL WECHAT



添加官方微信
OFFICIAL WECHAT



官方小程序

获取牙科动态，享受展会便利。
Enjoy the convenience in this digital dental age.

官方网站 WWW.DENTECH.COM.CN - THE OFFICIAL WEBSITE



展览会官方网站为：www.dentech.com.cn 展商可从网上查询最新展会动态及平面图等相关信息。

The official website of DenTech China is www.dentech.com.cn. Exhibitors can get updated information like exhibition progress, news and updated floor plan through this site.

Follow us on



DenTech China



DenTech China



DenTech China



展品范围（展览会展品分类）
EXHIBIT PROFILE

I. 牙科诊室 Dental practice

牙科综合治疗台和座椅
Dental units and chairs

照明系统
Lighting systems

抽吸、分离和空压机系统
Suction, separator and compressed air systems

诊室家具
Practice furniture

成像系统(相机设备、放射成像等)
Visual systems (Photographic systems, Radiographic devices, etc.)

麻醉器材
Anaesthetising equipment

咬合记录设备/功能性分析
Bite registration devices / Functional analysis

美白系统
Bleaching systems

手术马达系统
Surgical motor systems

CAD/CAM系统
CAD/CAM systems

诊断设备
Diagnostic devices

配比混合设备
Dosing and mixing devices

电刀设备

Electrosurgical devices

根管测量设备

Endodontic measuring devices

根管马达系统

Endodontic motor systems

比色设备

Color selection devices

水胶体材料调伴系统

Hydrocolloid conditioners

激光设备

Laser devices

光固化设备

Light polymerisation devices

种植导航设备

Implantation navigation devices

理疗设备

Physiotherapy equipment

喷砂设备

Powder jet devices

阻塞性睡眠呼吸暂停低通气综合征治疗器材

OSAHS treatment equipment

超声设备

Ultrasonic devices

牙髓活力测试设备

Vitality testing devices

臭氧治疗仪

Ozone-therapy devices

牙科材料(印模、水门汀、树脂、临时、粘接、根充材料等)

Dental materials (Impression materials, Cements, Composites, Temporary materials, Etching agents and adhesives, Root filling materials, etc.)

药物

Pharmaceuticals

动力设备和牙科手机

Driving devices and handpieces

手用器械

Hand instruments

车针和旋转工具(金刚砂车针、抛光头、镍钛旋转器械等)

Rotary instruments (Diamond instruments, Finishers, Root canal instruments, etc.)

牙科种植产品

Implant dentistry

支抗钉

Retention anchors and pins

牙科预防和保健

Prophylaxis / Dental and oral hygiene

正畸与美学牙科

Orthodontics and cosmetic dentistry

特殊耗材(贵金属、瓷、塑料、非贵金属、钛)

Special consumables (Precious metal, Ceramic, Plastics, Non-precious metal, Titanium)

管理软件

Application & Software

II.牙科技工室 Dental laboratory

技工室加工系统(瓷加工系统、石膏加工系统、金属加工系统等)
Functional systems for dental laboratories (Ceramic processing systems, Plaster processing systems, Alloy processing systems, etc.)

工作柜、工作台和牙科技工室设备

Functional cabinets, working benches, dental laboratory equipment

模型材料

Modelling materials

嵌体、冠桥材料

Materials for inlays, crowns and bridges

义齿材料

Denture materials

动力设备和牙科手机

Driving devices and handpieces

手用器械

Hand instruments

磨头工具

Rotary tools

正畸产品

Orthodontic construction elements

CAD/CAM材料

CAD/CAM material

人工牙

Artificial teeth

3D打印

3D printing

管理软件

Application & Software

III.感控产品 Infection control and maintenance

灭菌消毒设备

Sterilization / Disinfectant devices and auxiliaries

消毒剂

disinfectants

手术服、防护服

professional and protective clothing

IV.服务与咨询 Services and information

V.媒体与组织机构 Media and Organization

DENTECH CHINA 2024



展会日程

EXHIBITION AGENDA

布展 Stand Construction	2024.10.22-23	09:30-17:30
展览 Exhibiting	2024.10.24-26 2024.10.27	08:00-17:00 08:00-14:00
撤展 Stand Dismantling	2024.10.27	14:00

费用

COST OF PARTICIPATION

• 参展 Exhibition

9平米标准展位 9-square meter shell scheme..... RMB 28,000.00
转角位加收 Corner booth..... 10% premium

标准展位包括

A shell scheme will include:

- 公司中英文楣板
Fascia board with company name in both English and Chinese;
- 背板及侧板
Side and back walls;
- 1张咨询桌、2把折椅
One information counter & two folding Chairs;
- 2只射灯
Two spotlights;
- 1个220V/5A 插座
One 220V/5A socket;
- 满铺地毯
Carpeting;
- 展位清洁
Stand cleaning

• 参会 Seminars

每2小时1场 A 2-hour seminar..... RMB 15,000.00
(small room, with the capacity for 60-80 people)
每2小时1场 A 2-hour seminar..... RMB 30,000.00
(big room, with the capacity for 200-250 people)

技术交流会包括:

A seminar will include:

- 会议室
Conference room;
- 投影机、屏幕、话筒
Projector, screen & microphone;
- 饮用水
Drinking water;

• 广告 Advertisement

入场券背面 Back of entrance tickets..... RMB 50,000.00
会刊封底 Back cover page of show directory..... RMB 20,000.00
会刊首页 First page of show directory..... RMB 15,000.00
会刊封二 Inside front page of show directory..... RMB 15,000.00
会刊封三 Inside back cover page of show directory..... RMB 10,000.00
会刊插页 Inside page of show directory..... RMB 8,000.00
南北广场回型包柱广告 Banner in the south and north square... RMB 100,000.00
户外落地广告牌 Banner outside the exhibition hall..... RMB 60,000.00
中厅落地广告牌 Banner in the central lobby..... RMB 40,000.00
中厅回型包柱广告 Banner on the column in the central lobby... RMB 30,000.00
天桥广告 Banner on the overline bridge..... RMB 60,000.00
网站首页 Homepage of www.dentech.com.cn..... RMB 30,000.00/yr
《展会特报》内页整版 DenTech China Newspaper Inside Full Page
..... RMB 15,000.00
《展会特报》内页1/2版 DenTech China Newspaper Inside 1/2 Page
..... RMB 8,000.00

增值服务

VALUE-ADDED SERVICE

展商可提供 200 字内新产品图文信息，有机会免费刊登于展会官方微信、微博、LinkedIn、Facebook、Twitter 等平台。

DenTech China exhibitors have the opportunity to release the new products information (in 200 words with picture) on Wechat, Weibo, LinkedIn, Facebook, Twitter, etc.

展会联系

CONTACT INFO

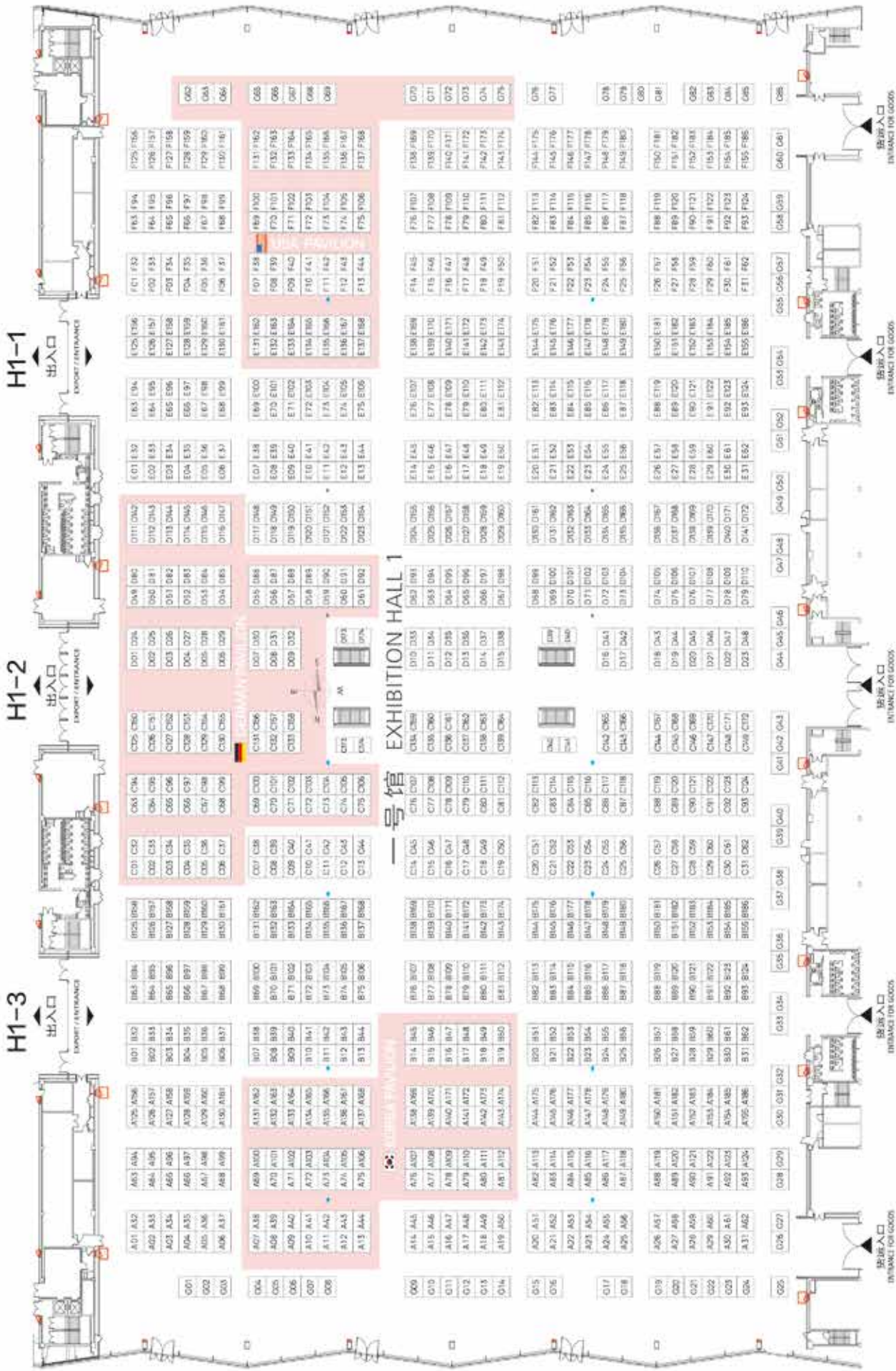
上海博星展览有限公司

Shanghai Informa Markets ShowStar Exhibition Company Limited

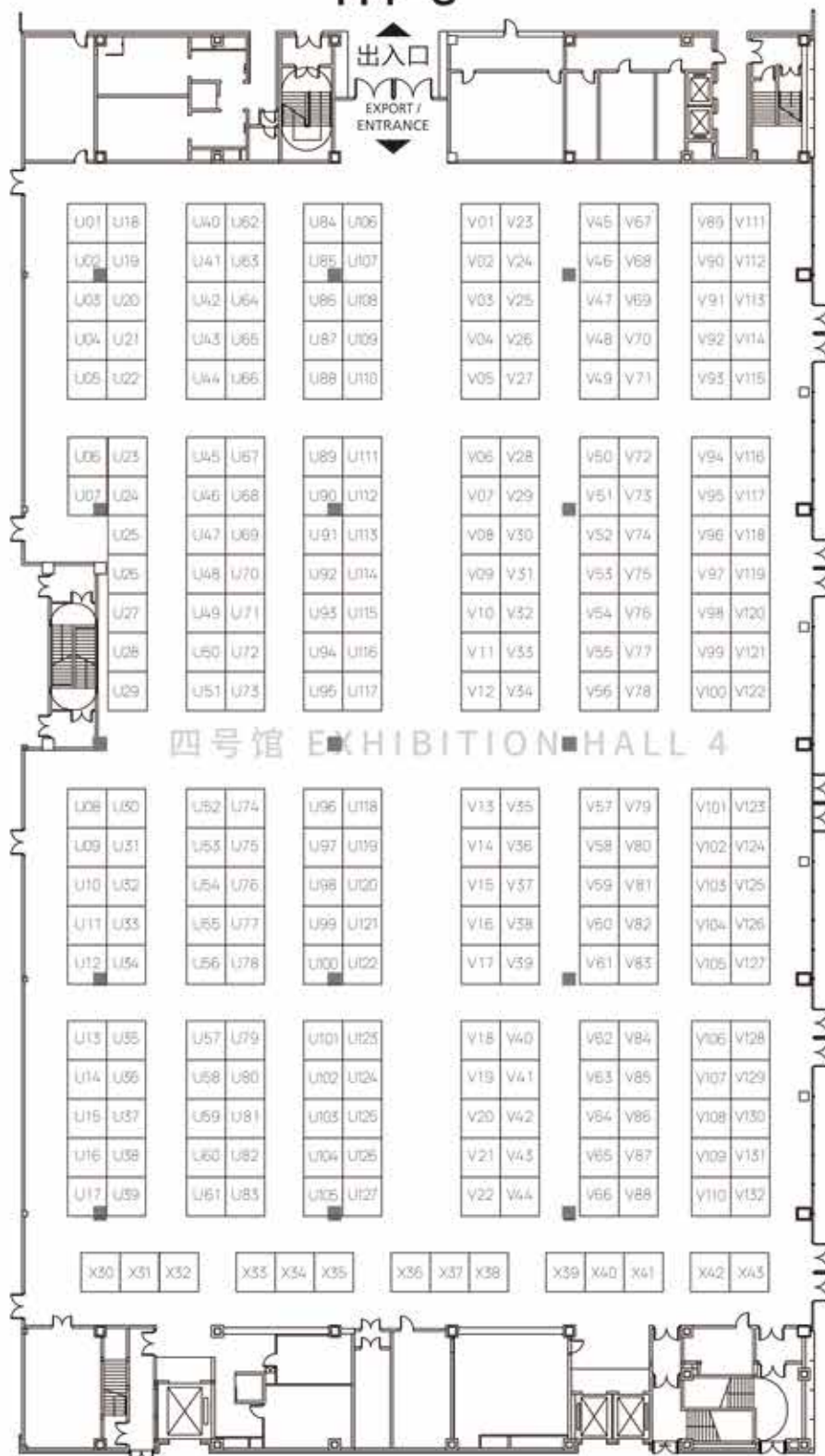
上海市黄浦区淮海中路300号香港新世界大厦29楼
29F, K11 Atelier, 300 Huai Hai Road Central, Huangpu District, Shanghai

电话 Tel: +86-21-6157 3953 (沈如玥小姐 Ms. Sandra Shen)
+86-21-6157 3954 (周捷超小姐 Ms. Vivian Zhou)
+86-21-6157 3956 (诸静小姐 Ms. Sylvia Zhu)

E-mail: sandra.shen@informa.com / jc.zhou@informa.com
sylvia.zhu@informa.com



H4-3



DenTech China 2024

www.dentech.com.cn

ShowStar
informa **markets**

上海博星展览有限公司

Shanghai Informa Markets ShowStar Exhibition Company Limited

上海市黄浦区淮海中路300号香港新世界大厦29楼 邮编: 200021

电话: +86-21-6157 3953 (沈如玥小姐) / 6157 3954 (周捷超小姐) / 6157 3956 (诸静小姐)

电子邮件: sandra.shen@informa.com / jc.zhou@informa.com / sylvia.zhu@informa.com

29F, K11 Atelier, 300 Huai Hai Road Central, Huangpu District, Shanghai, Postal Code 200021

Tel: +86-21-6157 3953 (Ms. Sandra Shen) / 6157 3954 (Ms. Vivian Zhou) / 6157 3956 (Ms. Sylvia Zhu)

E-mail: sandra.shen@informa.com / jc.zhou@informa.com / sylvia.zhu@informa.com

